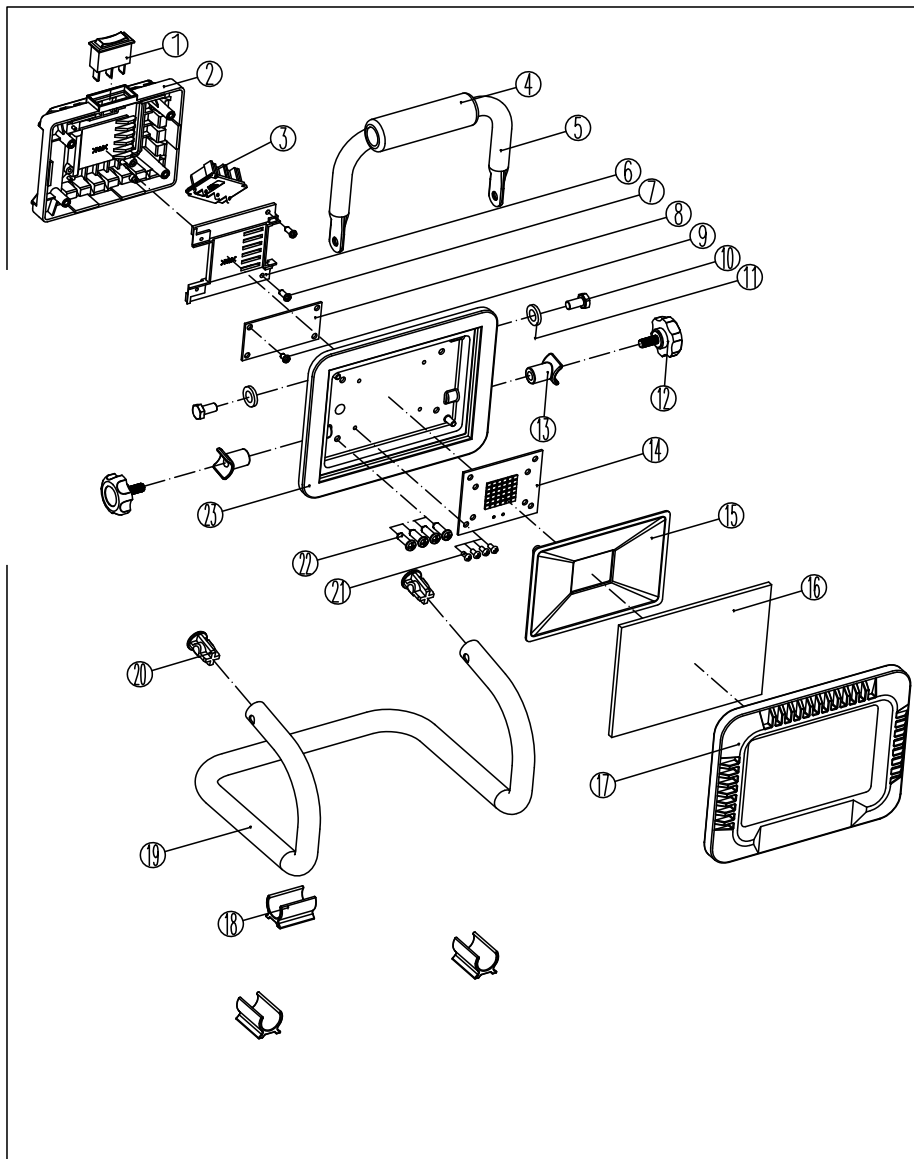


Explode Drawing of RDP-SWL20 solo



SPARE PARTS of RDP-SWL20

1	switch	1		
2	Back cover	1	PA6	
3	Battery bag pin	1		
4	Protective gloves	1	DEPM	
5	Handle	1	Q235	Painting
6	Pin cover	1	PA6	
7	Cross head tapping screw	2	ST2.9×10F GB845	
8	Pressure booster plate	1		
9	Cross head tapping screw	1	ST2.9×6F GB845	
10	M6×12 Bolt	2	GB5783	
11	M6 Flat cushion	2	GB95	
12	M6 Lock knob	2		
13	Connecting sleeve	2	ABS	
14	Lamp panel	1		
15	Reflector panel	1	PC	
16	Glass	1	Toughened glass	
17	Gluing	1	DEPM	
18	Bent pipe footrest	3	PA6	
19	Bend pipe support	1	Q235	Painting
20	Bend plug	2	PA6	
21	M3×6 Crosshead screw	4	GB818	
22	Cross head tapping screw	4	ST4.2×16F GB845	
23	Lamp housing	1	Aluminium alloy	